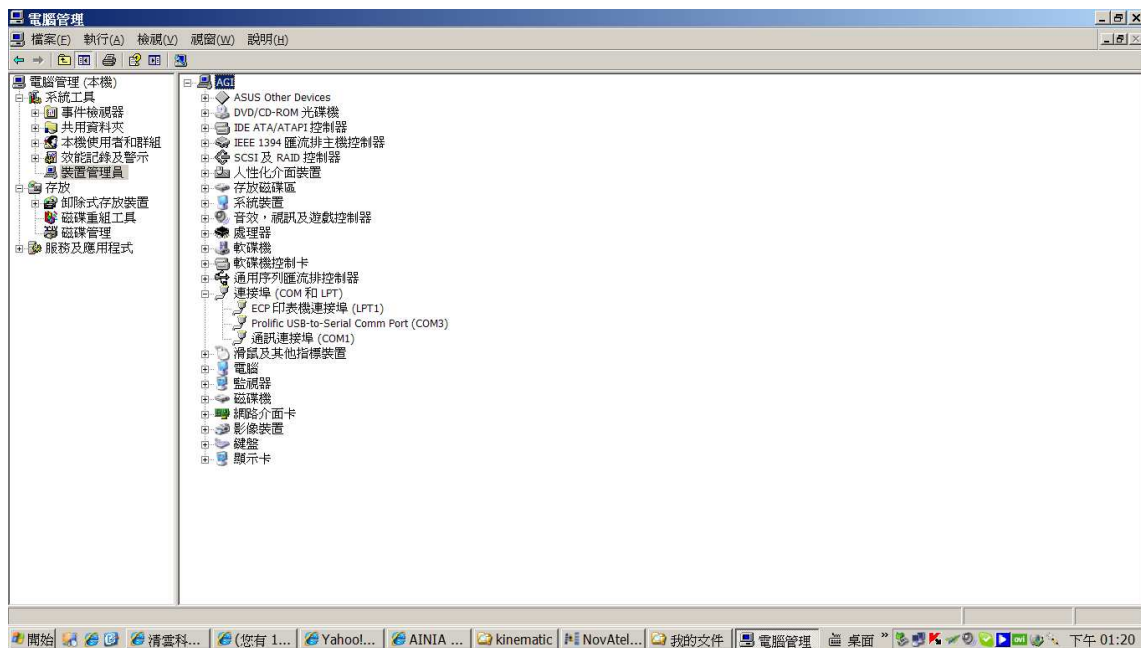


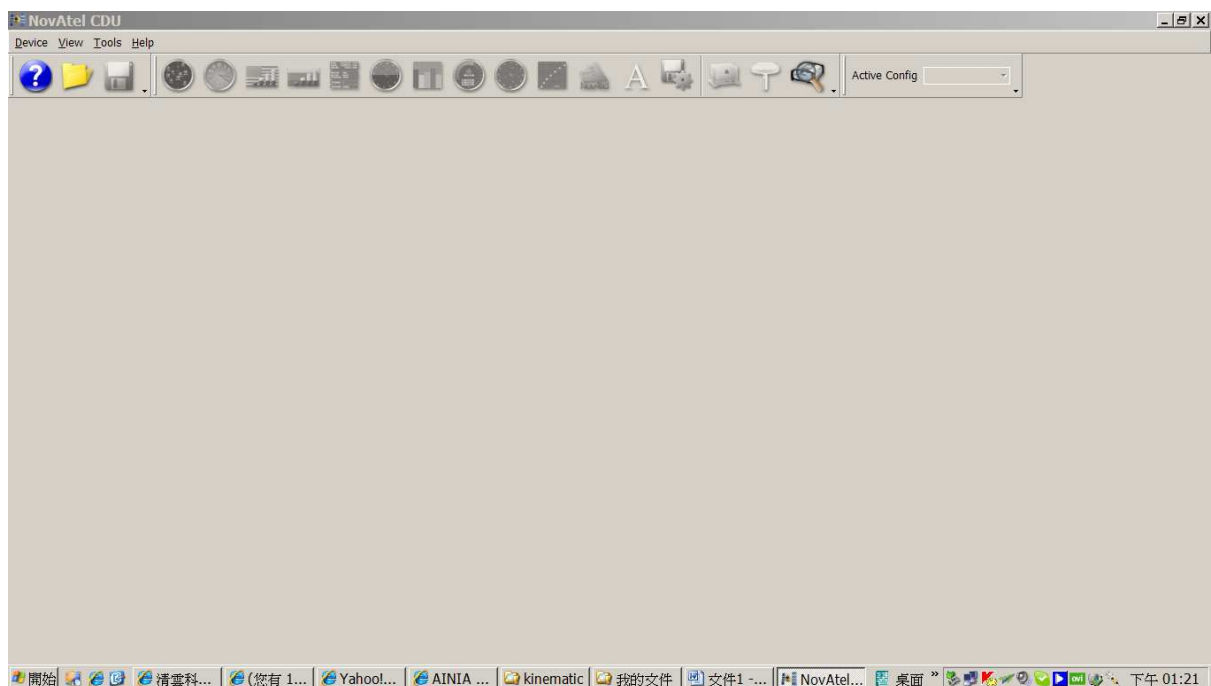
Operation to DL-V3

事前設定

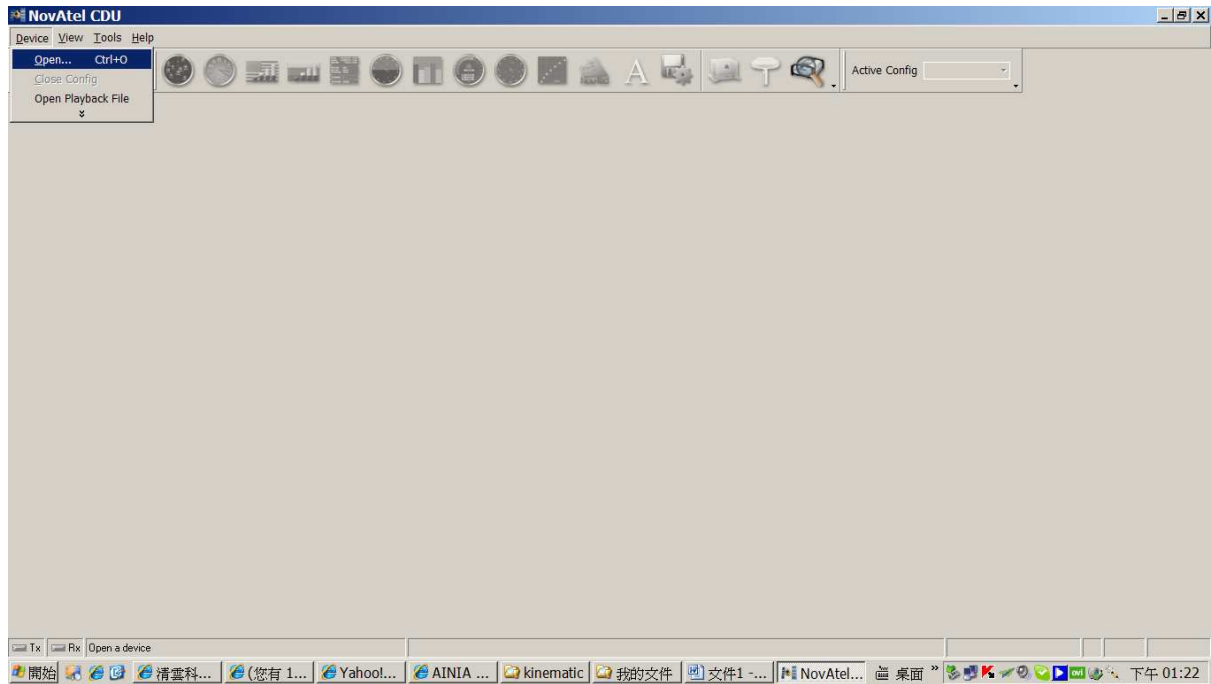
檔案總管 → 我的電腦 (右鍵) → 電腦管理 → 裝置管理員 → 連接埠(查看)



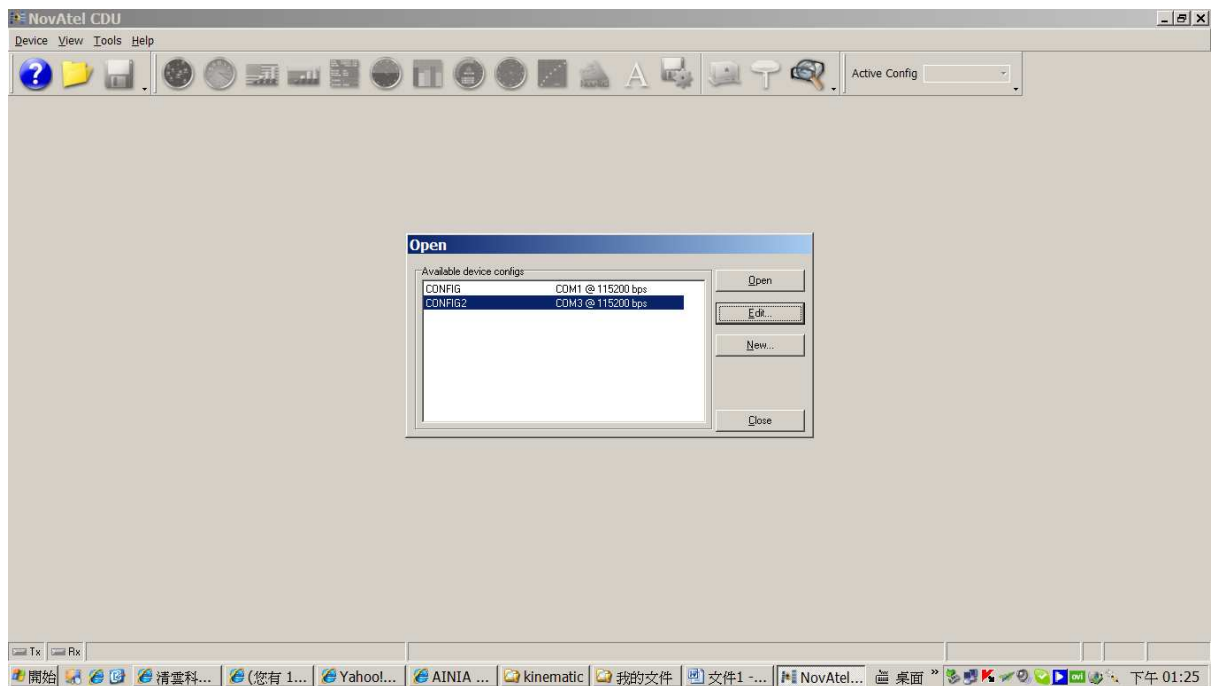
RUN NovAtel CDU



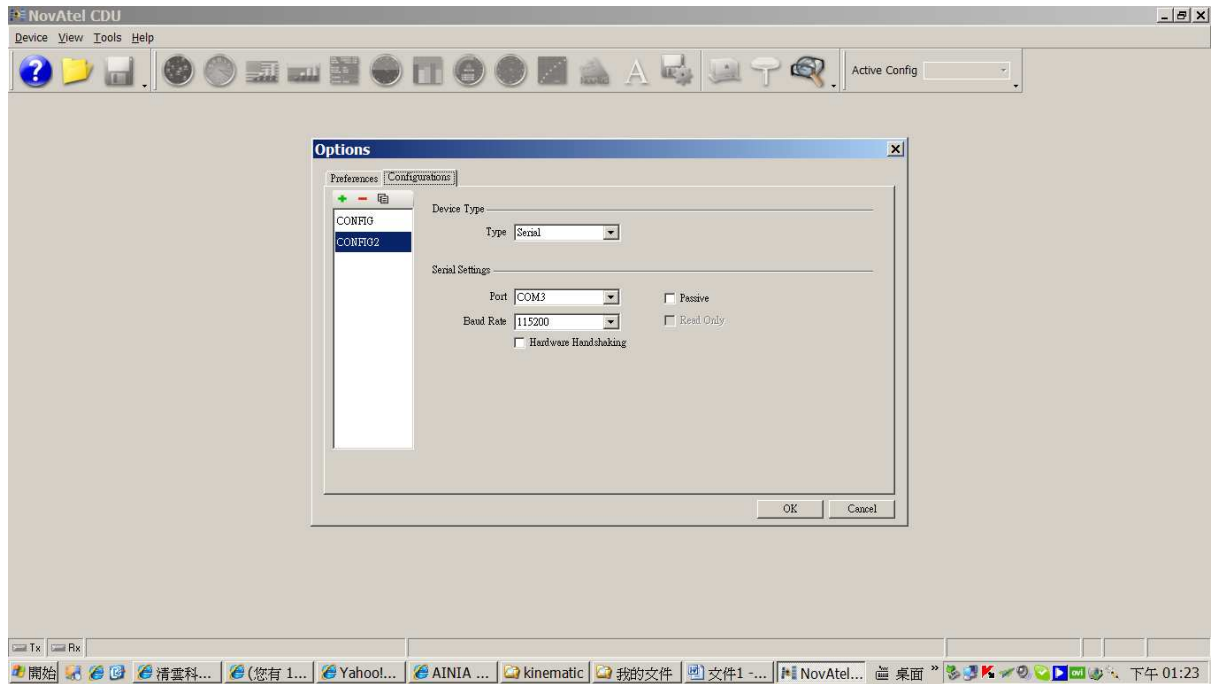
Device → Open



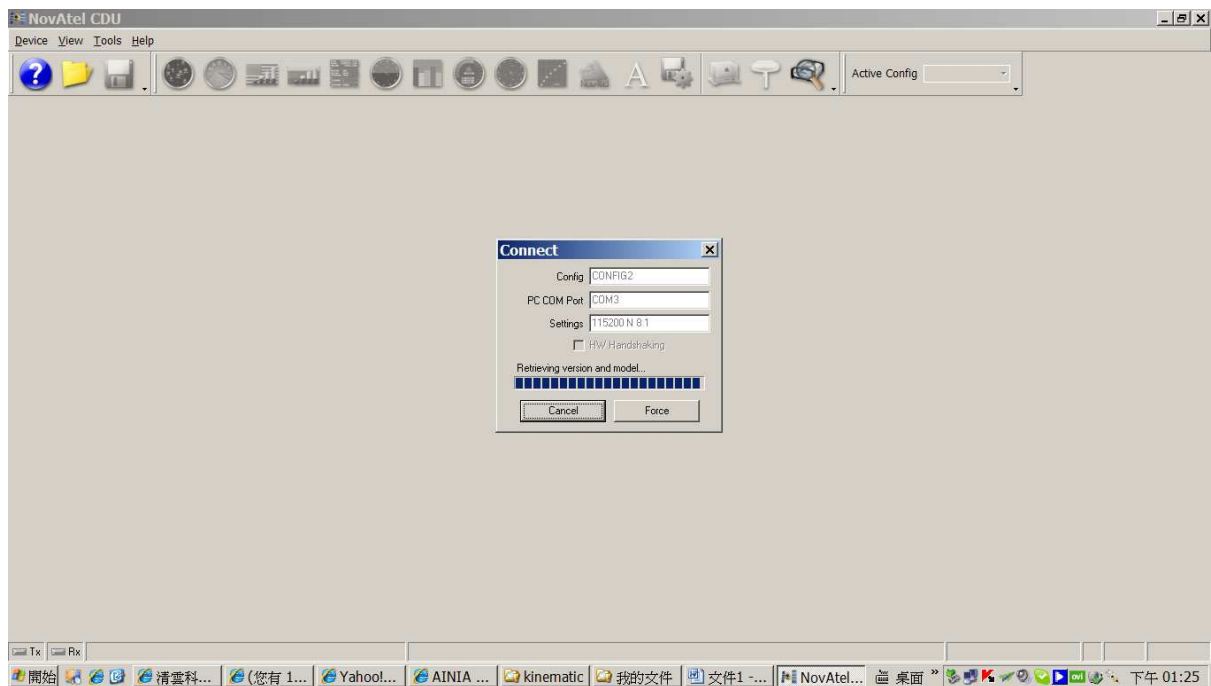
EDIT or NEW



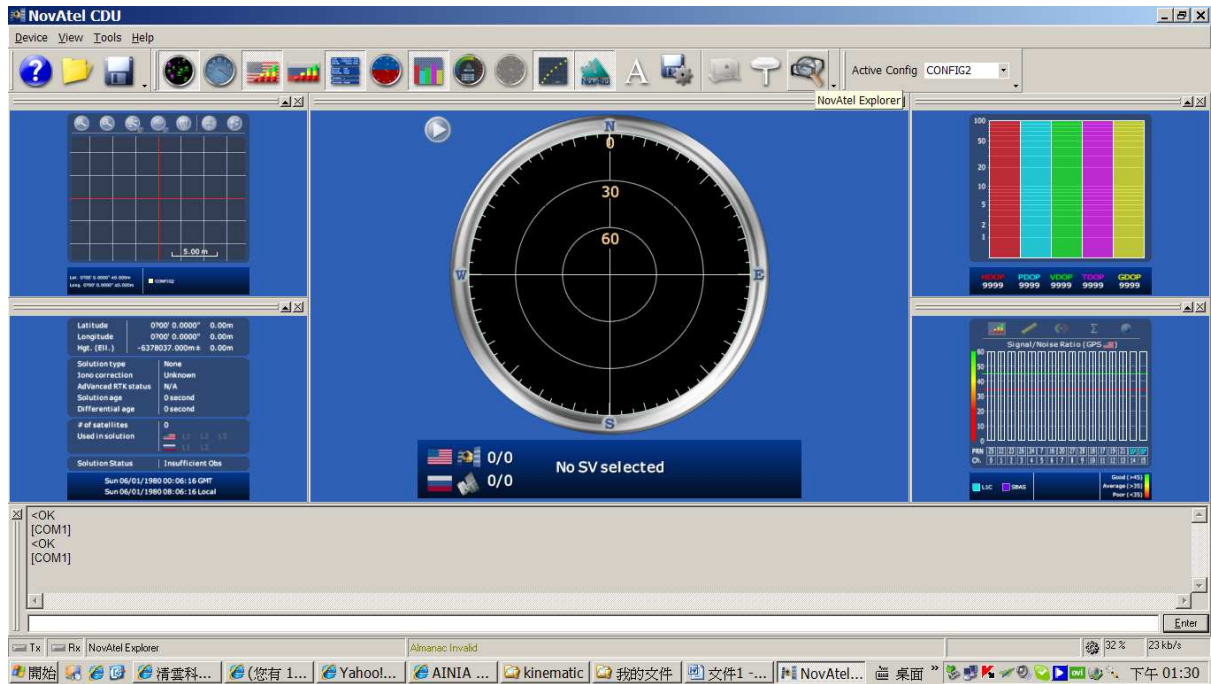
PORT (COM?) & 115200



OK -> OPEN



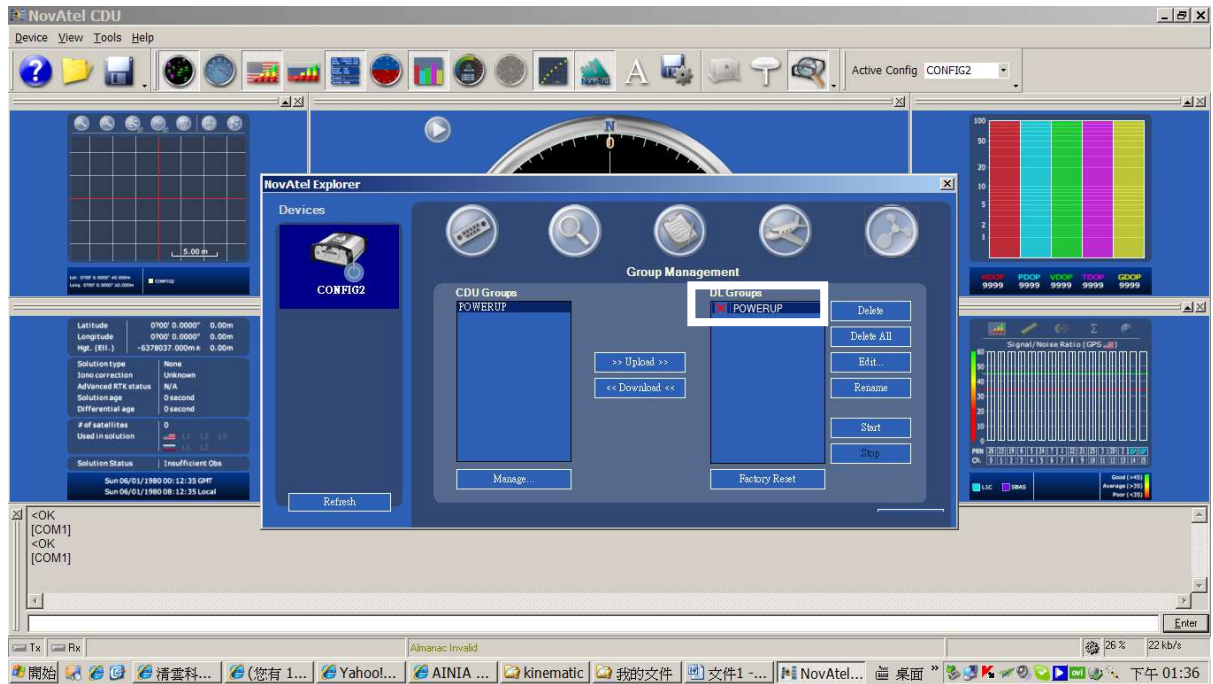
NovAtel Explore (far right)



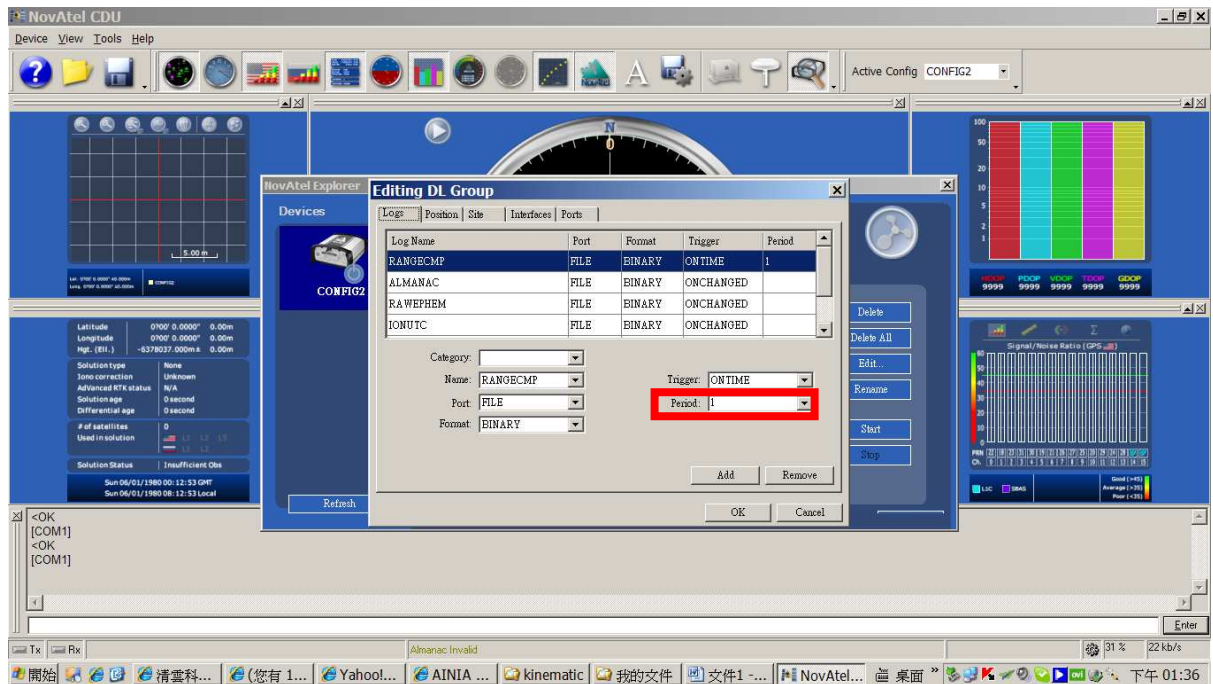
Group Management (far right)

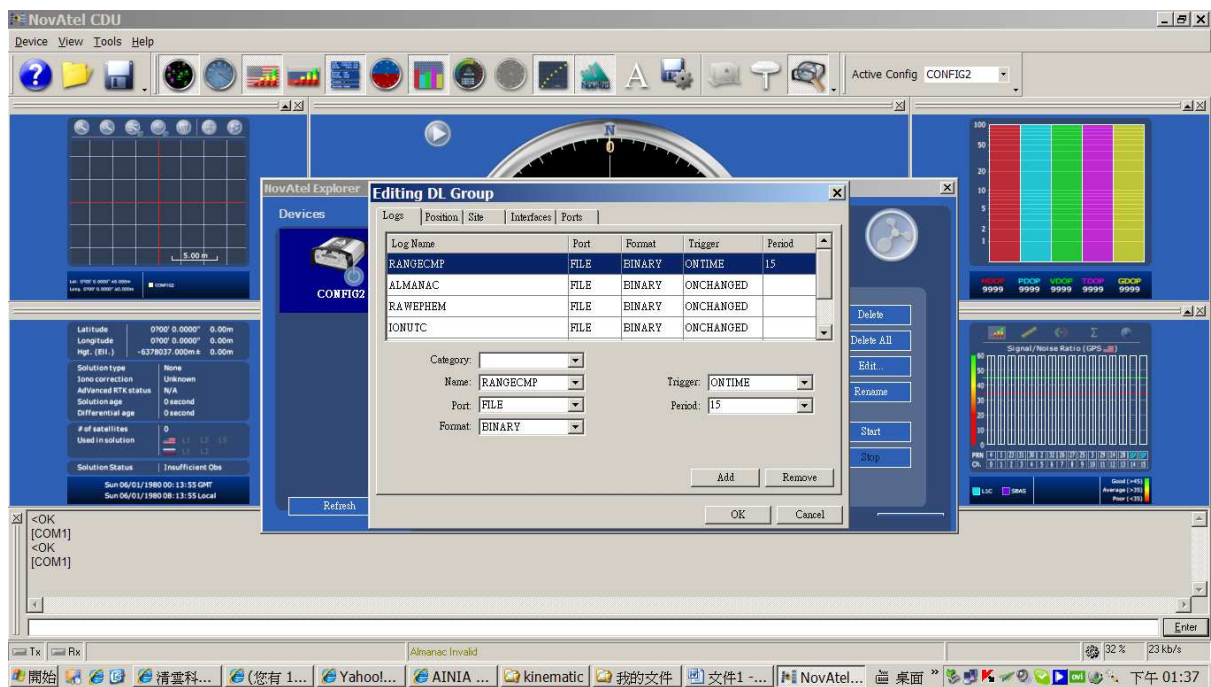


Double clicks



period: 15 sec



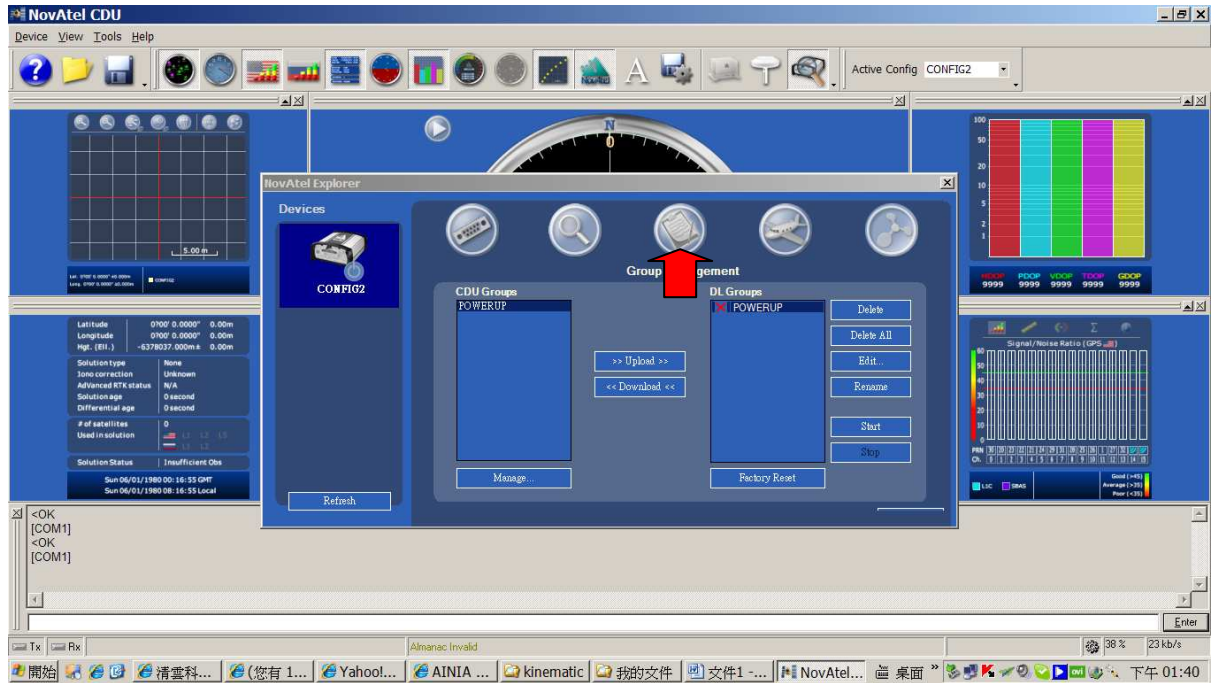


OK

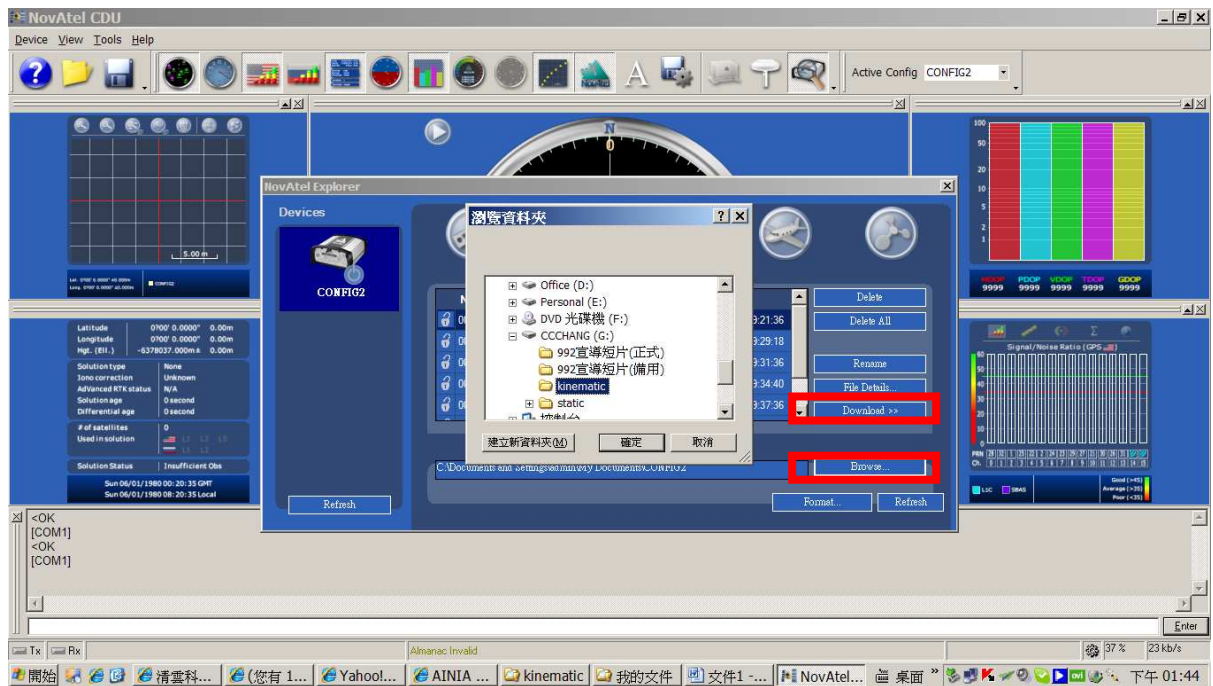
設定完成

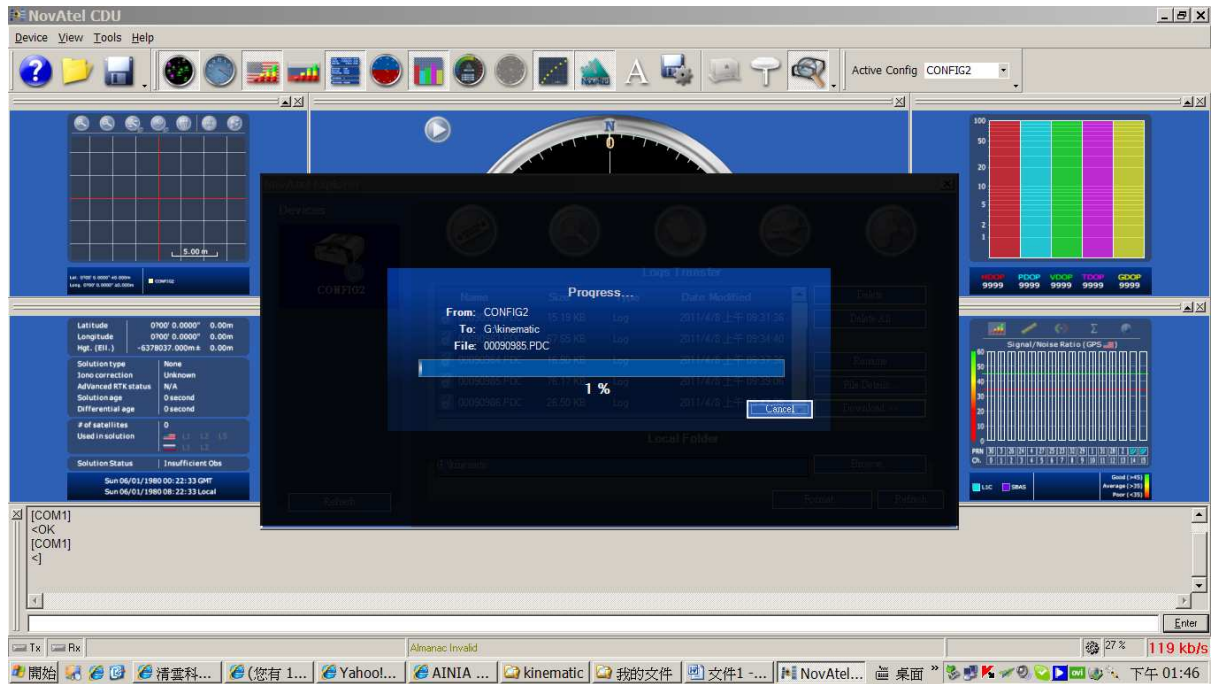
資料下載

Logs Transfer



Browse → Download





檢查 隨身碟 是否存有檔案 且有儲存量

可進行接收器資料刪除 工作 (if necessary)