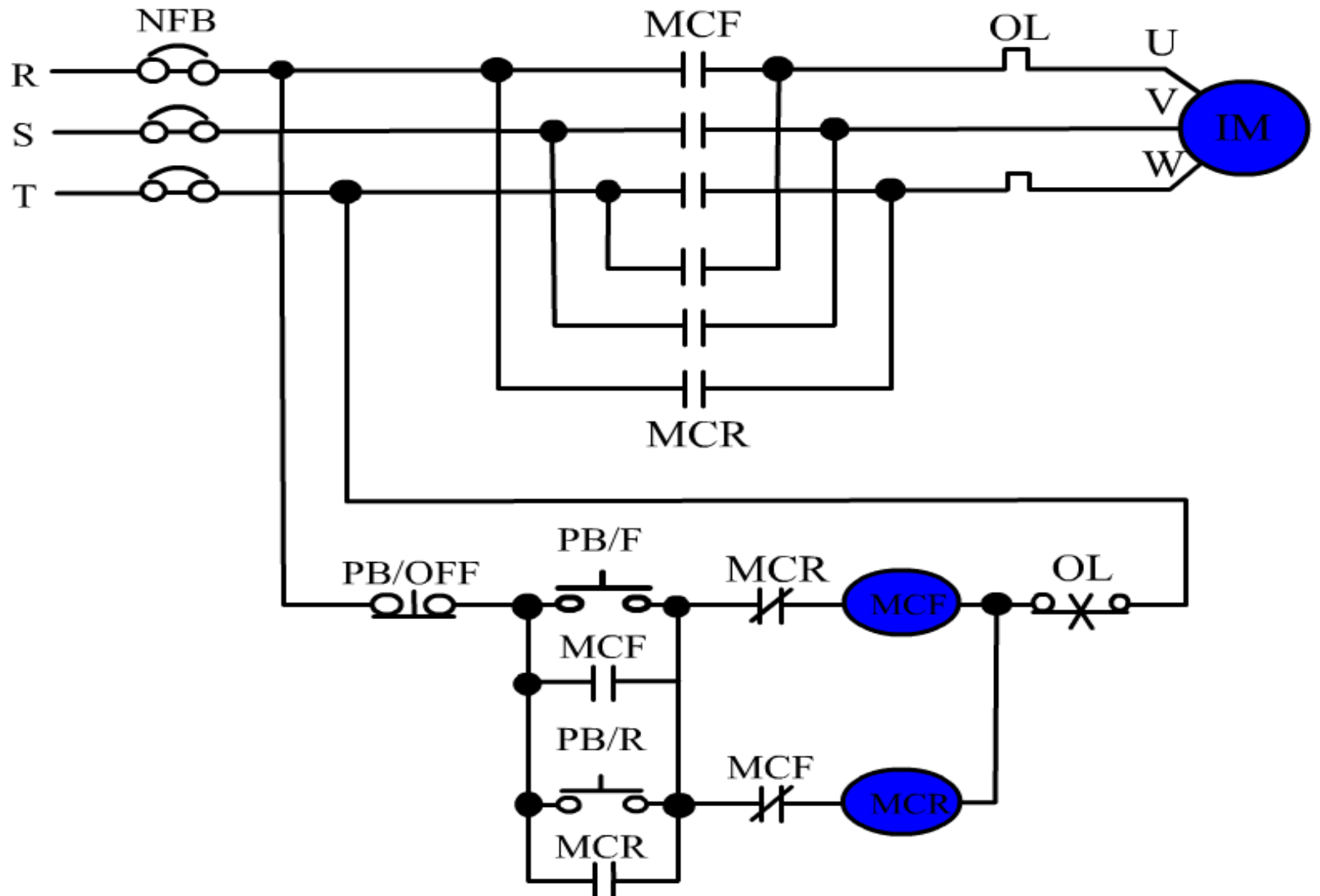


Application of basic commands and design practice

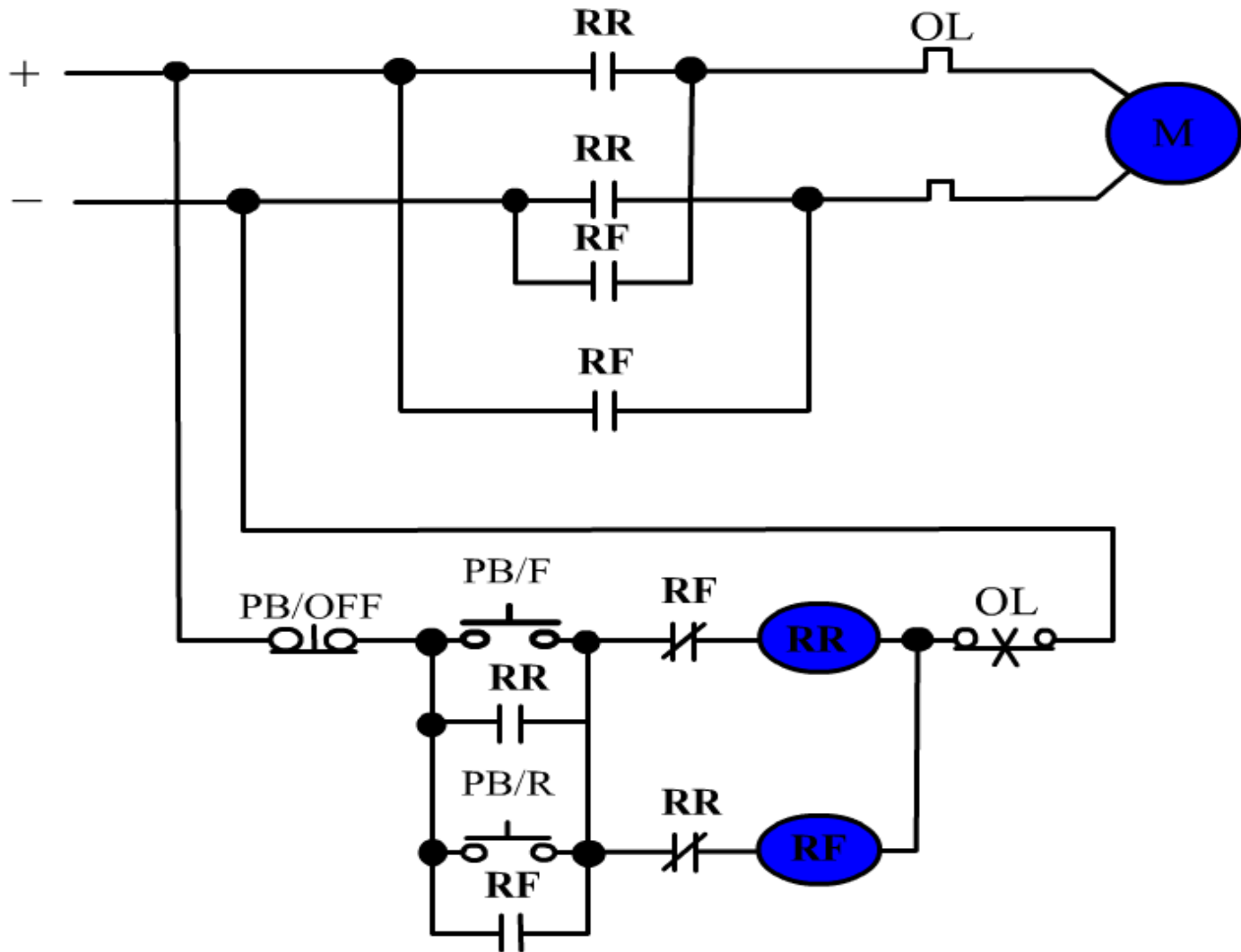
Penerapan perintah dasar dan praktik desain





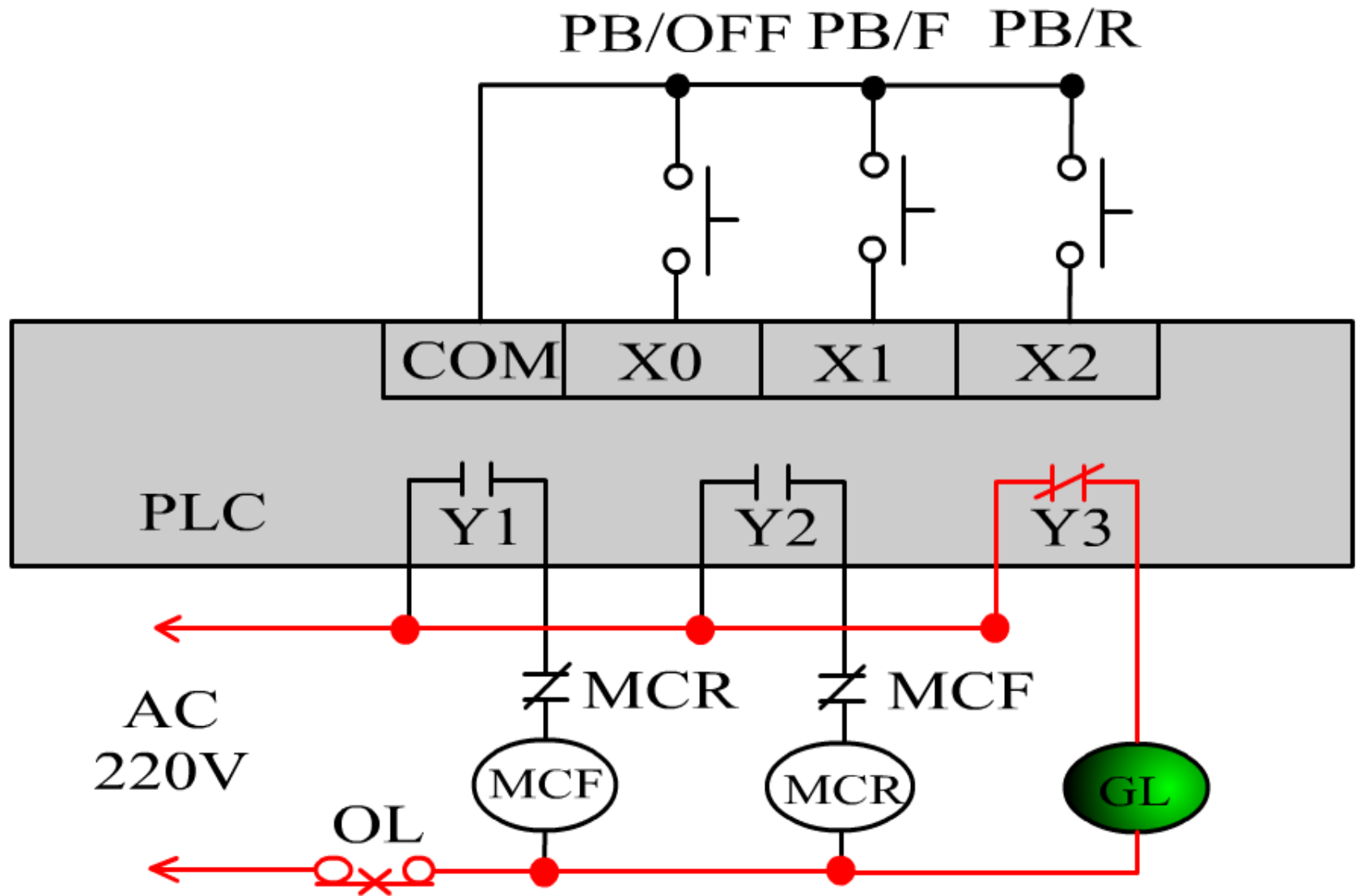
Three-phase motor forward and reverse control circuit

Sirkuit kontrol maju dan mundur motor tiga fase



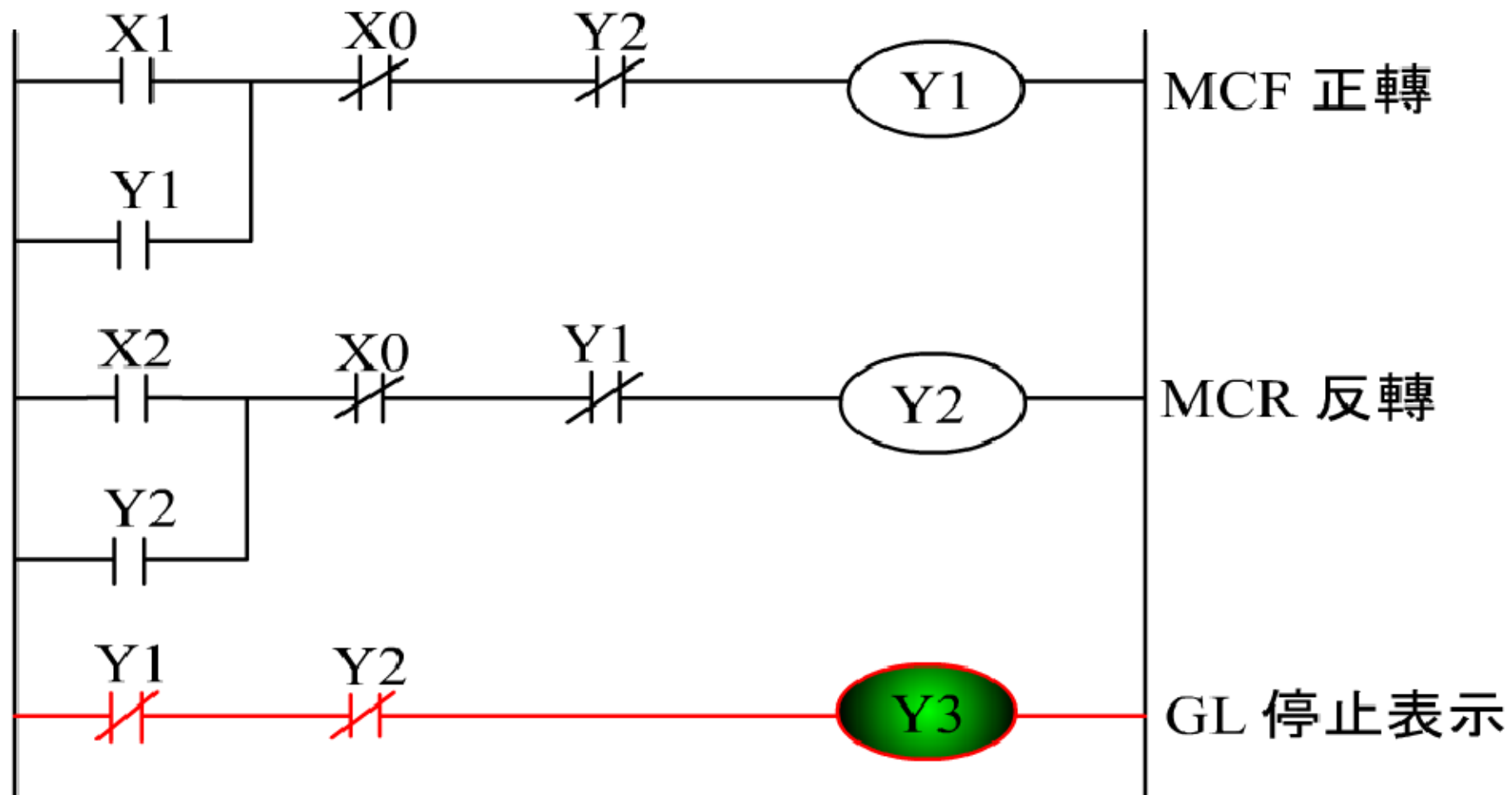
DC motor forward and reverse control circuit

Rangkaian kontrol maju dan mundur motor DC



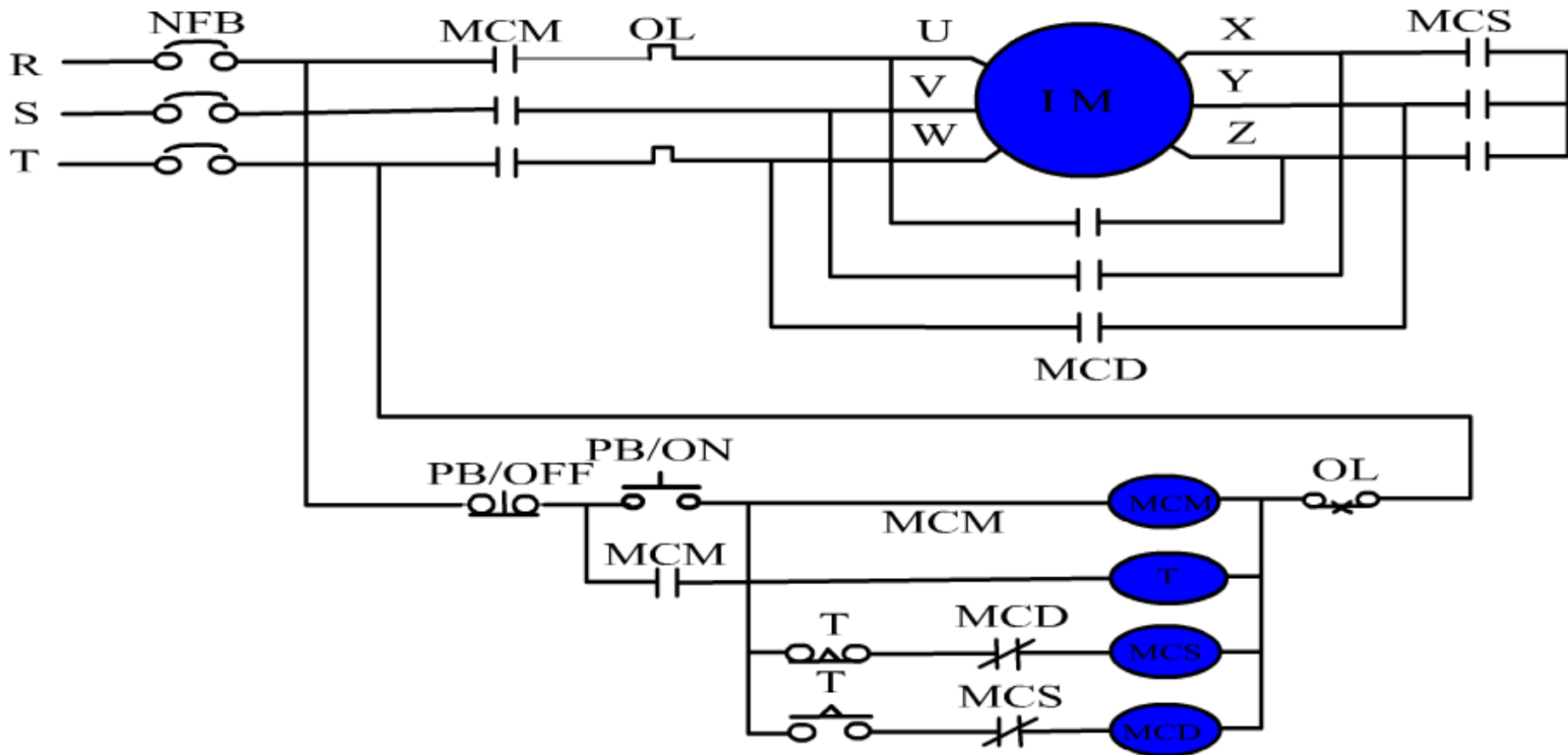
AC motor forward and reverse control circuit I/O wiring diagram

Diagram pengkabelan sirkuit kontrol maju dan mundur motor AC



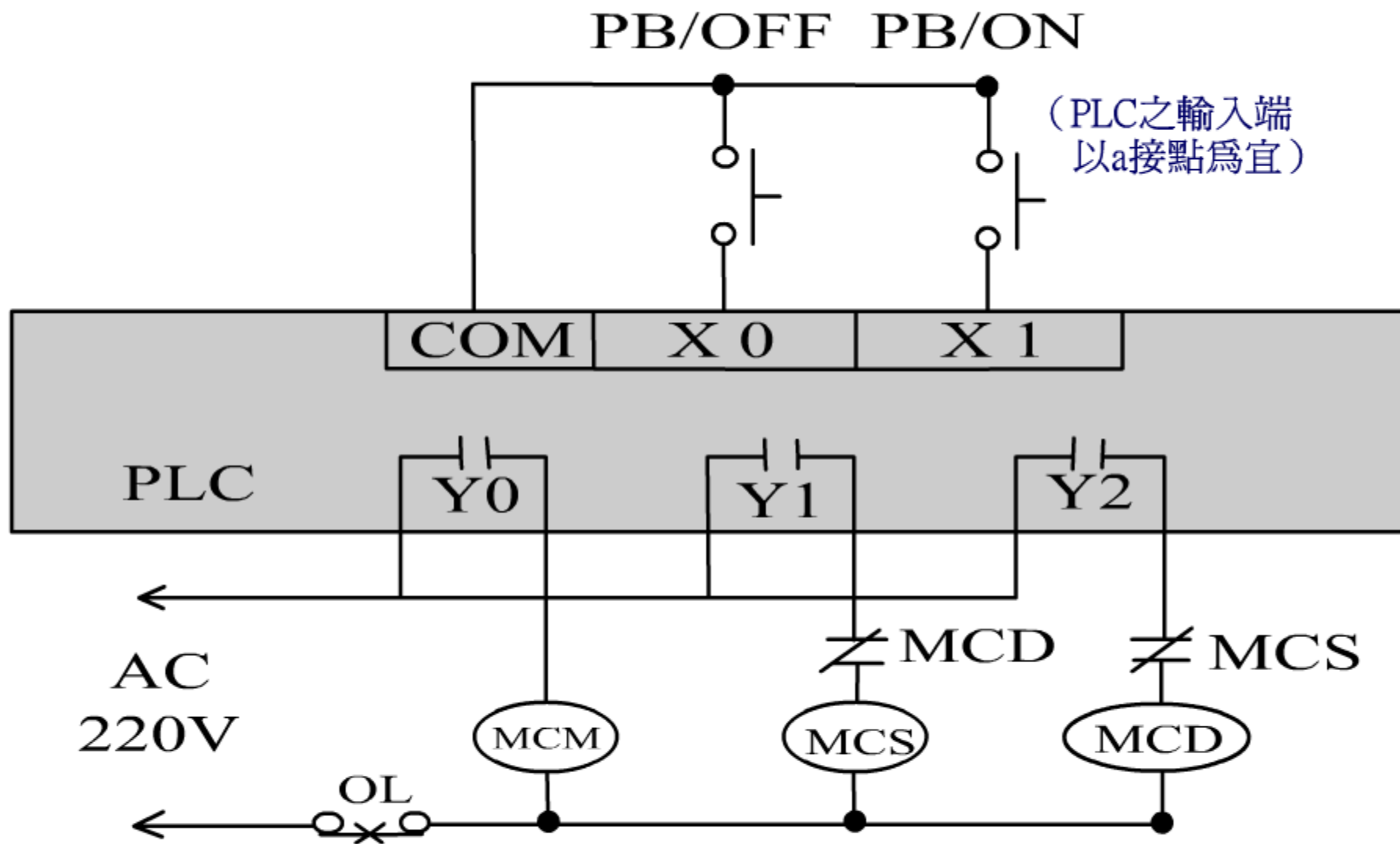
DC motor forward and reverse control circuit wiring diagram

Diagram pengkabelan sirkuit kontrol maju dan mundur motor DC



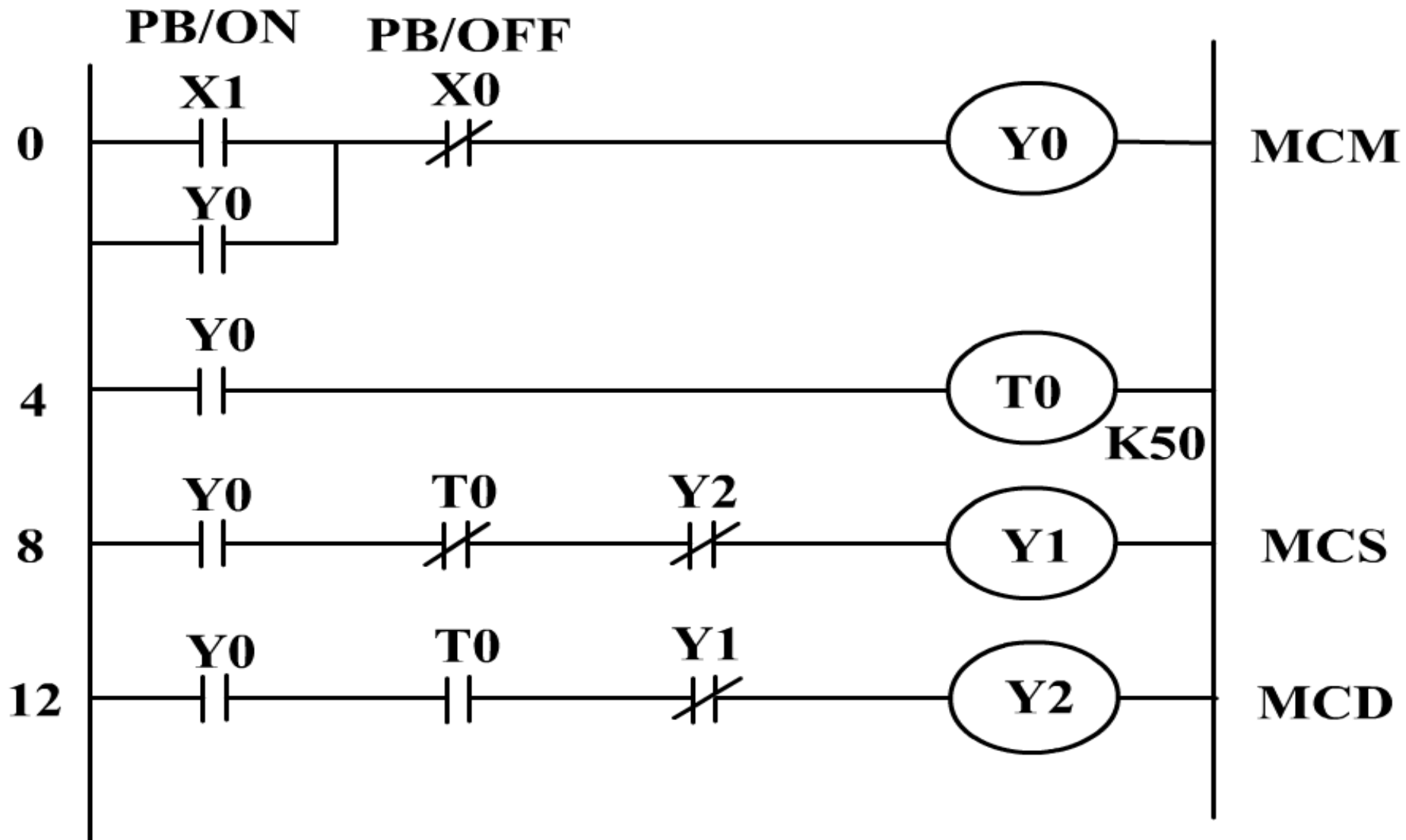
Three-phase motor STAR starting control circuit

Sirkuit kontrol start STAR motor tiga fase



PLC control STAR start control circuit

Kontrol PLC STAR mulai rangkaian kontrol

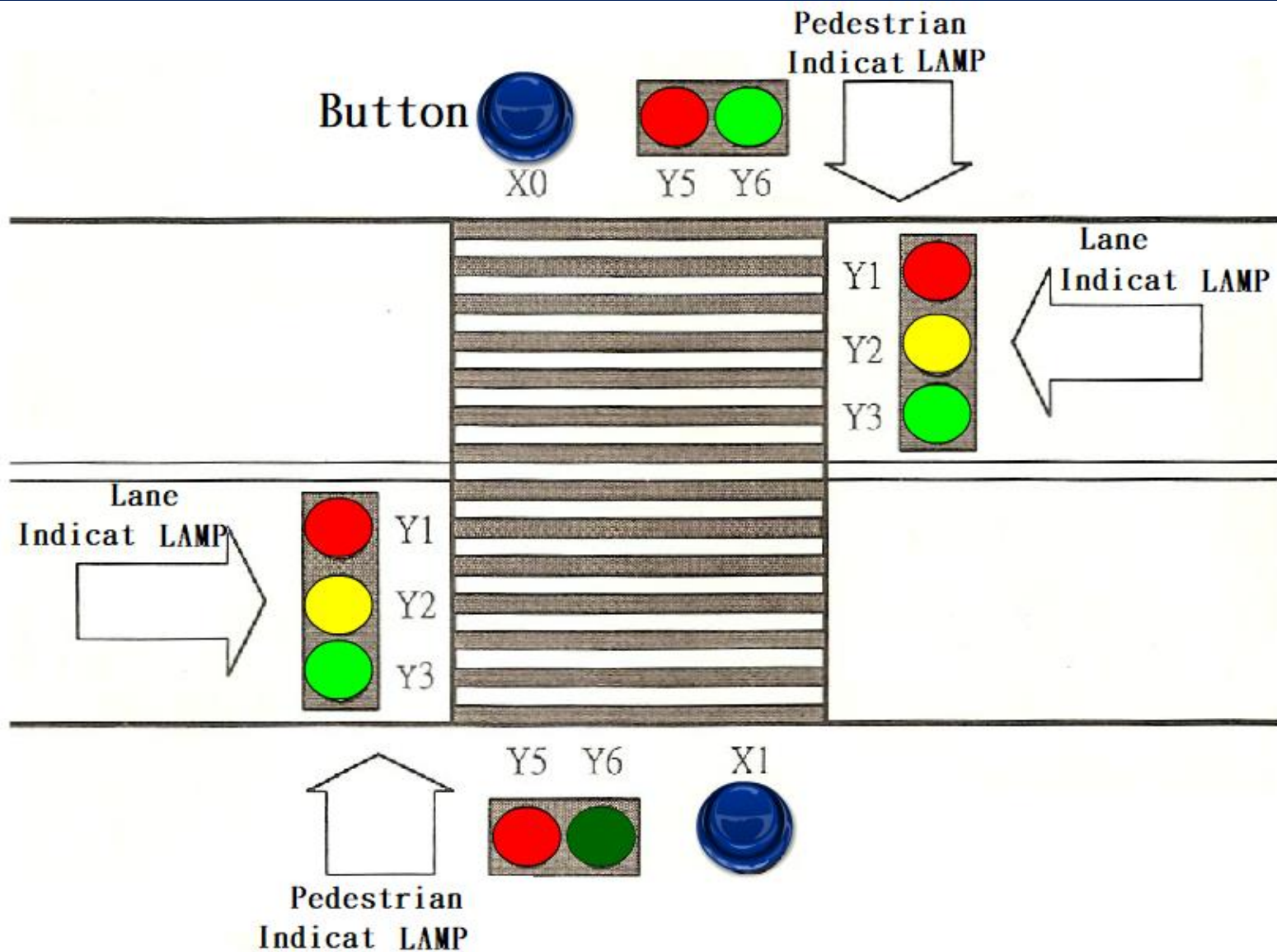


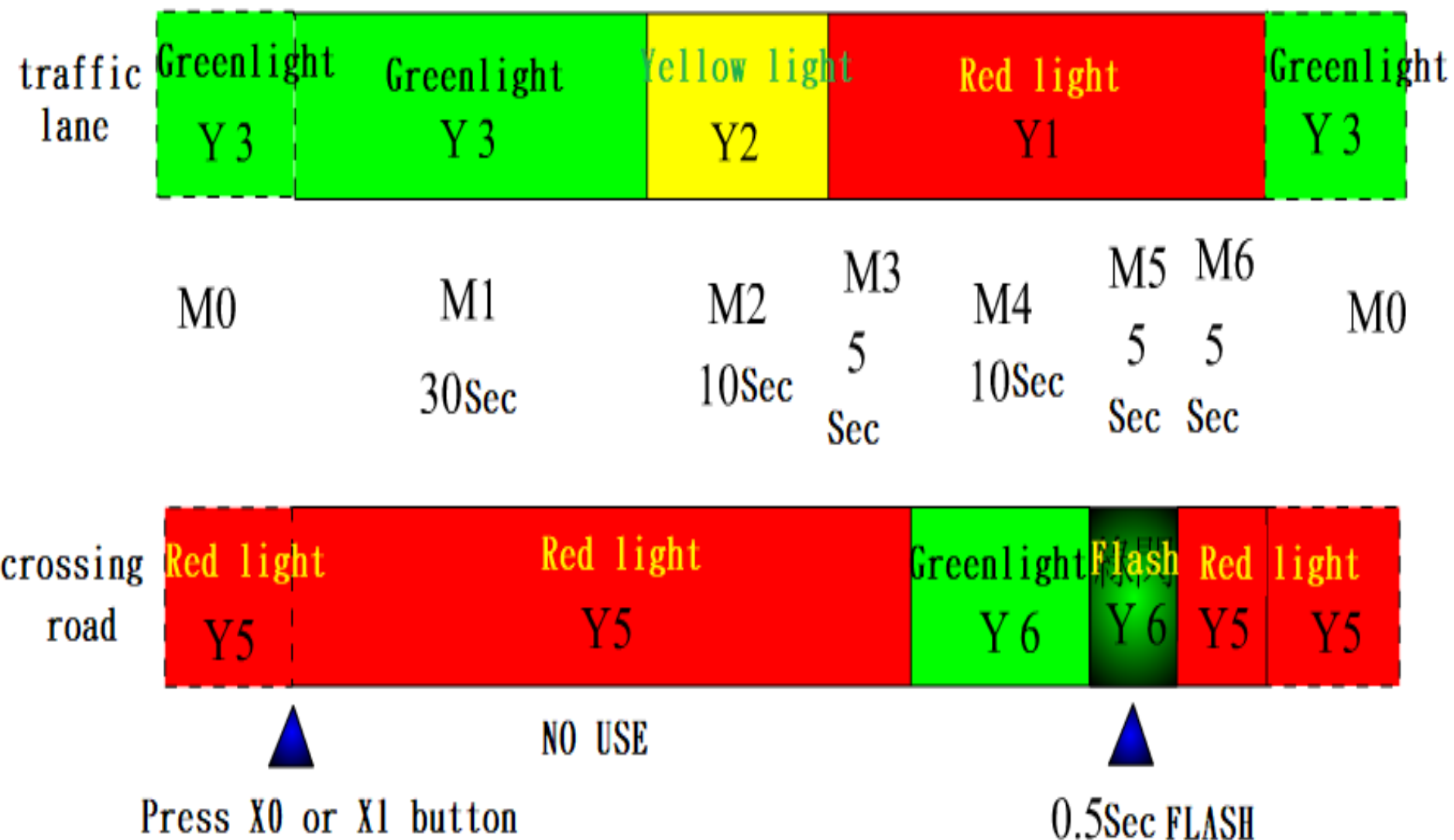
PLC control STAR start control circuit

Kontrol PLC STAR mulai rangkaian kontrol

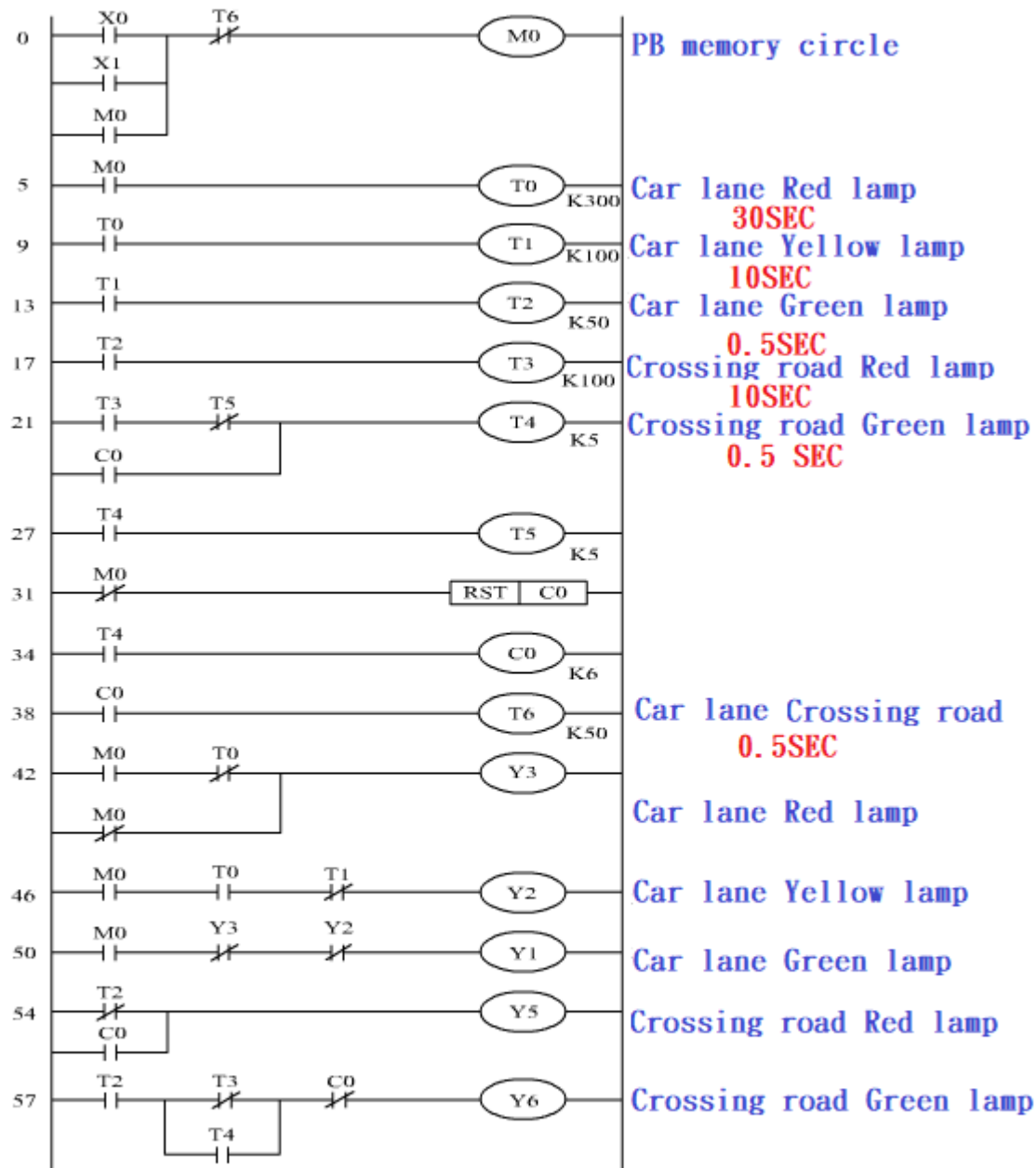
Traffic light control

<http://w3.uch.edu.tw/meplc/PLC-2/PLCCH5.htm>





Driving diagram of traffic lane and crossing road lights



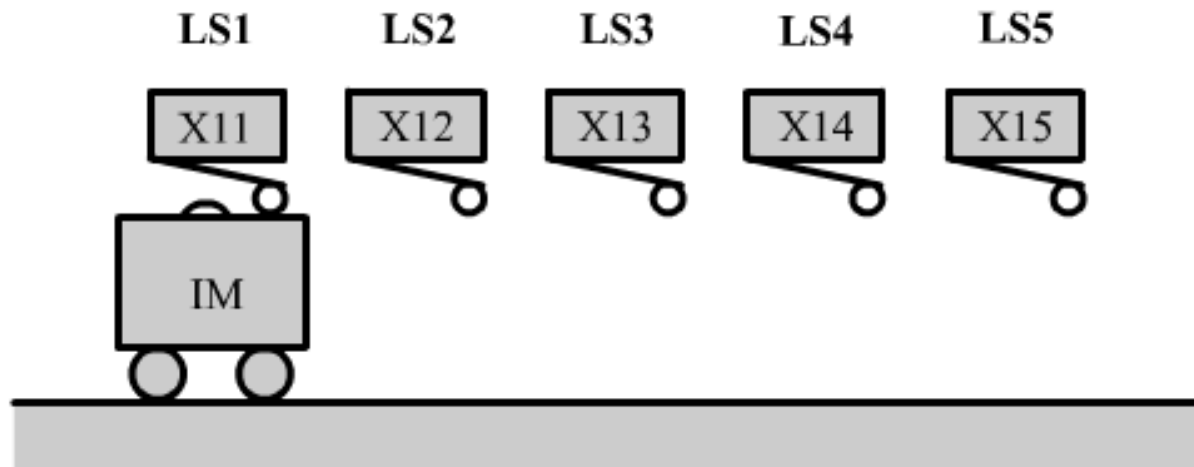
Traffic light control loop
Lingkaran kontrol lampu lalu lintas






0	LD	X0
1	OR	X1
2	OR	M0
3	ANI	T6
4	OUT	M0
<hr/>		
5	LD	M0
6	OUT	T0
	SP	K300
<hr/>		
9	LD	T0
10	OUT	T1
	SP	K100
<hr/>		
13	LD	T1
14	OUT	T2
	SP	K50
<hr/>		
17	LD	T2
18	OUT	T3
	SP	K100
<hr/>		
21	LD	T3
22	ANI	T5
23	OR	C0
24	OUT	T4

	SP	K5
<hr/>		
27	LD	T4
28	OUT	T5
	SP	K5
<hr/>		
31	LDI	M0
32	RST	C0
<hr/>		
33	LD	T4
34	OUT	C0
	SP	K6
<hr/>		
37	LD	C0
38	OUT	T6
	SP	K50
<hr/>		
41	LD	M0
42	ANI	T0
43	ORI	M0
44	OUT	Y3
<hr/>		
45	LD	M0
46	AND	T0
47	ANI	T1
48	OUT	Y2
<hr/>		
49	LD	M0

50	ANI	Y3
51	ANI	Y2
52	OUT	Y1
<hr/>		
53	LDI	T2
54	OR	C0
55	OUT	Y5
<hr/>		
56	LD	T2
57	LDI	T3
58	OR	T4
59	ANB	
60	ANI	C0
61	OUT	Y6
<hr/>		
62	END	

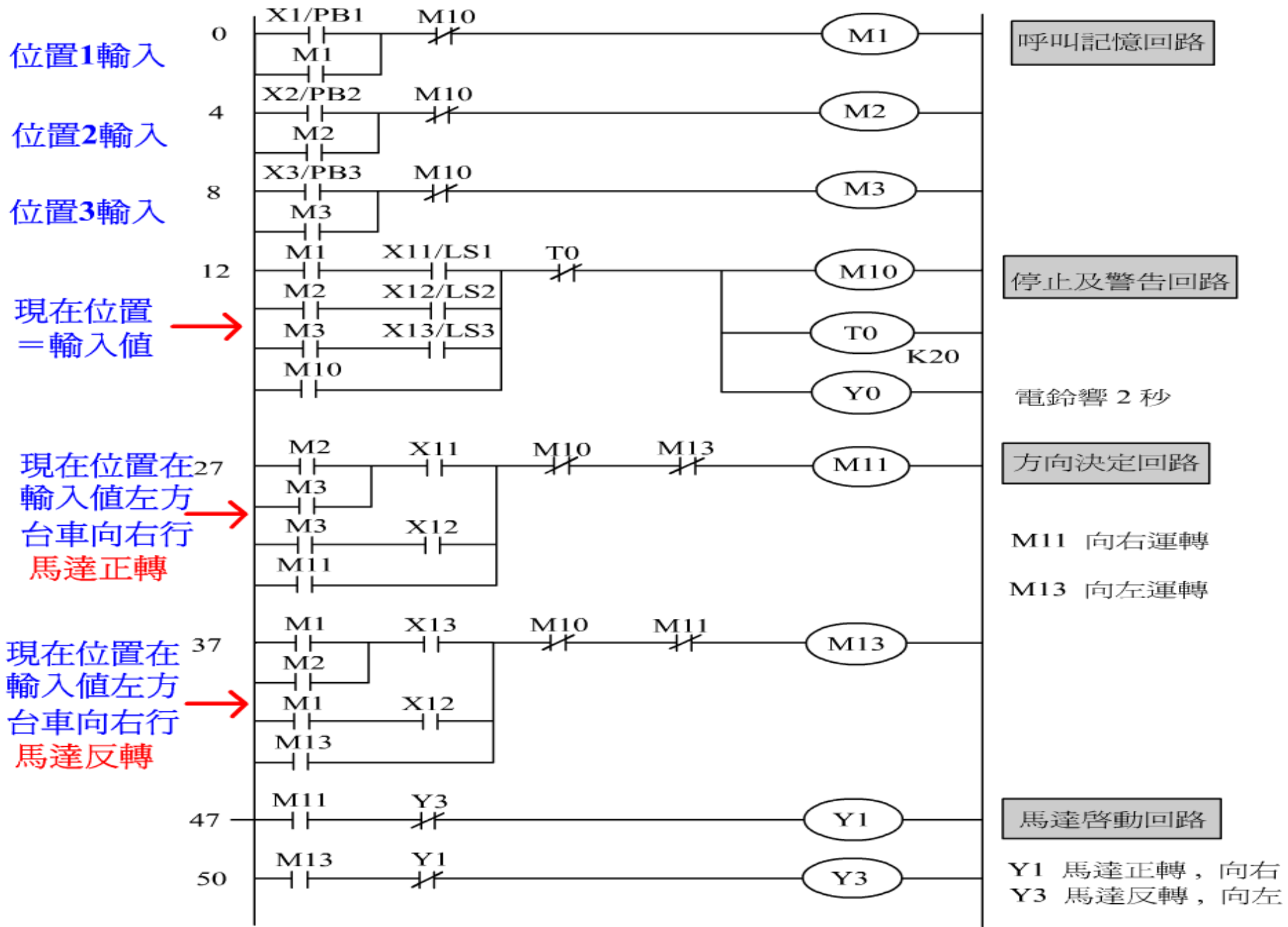
Limit Switch



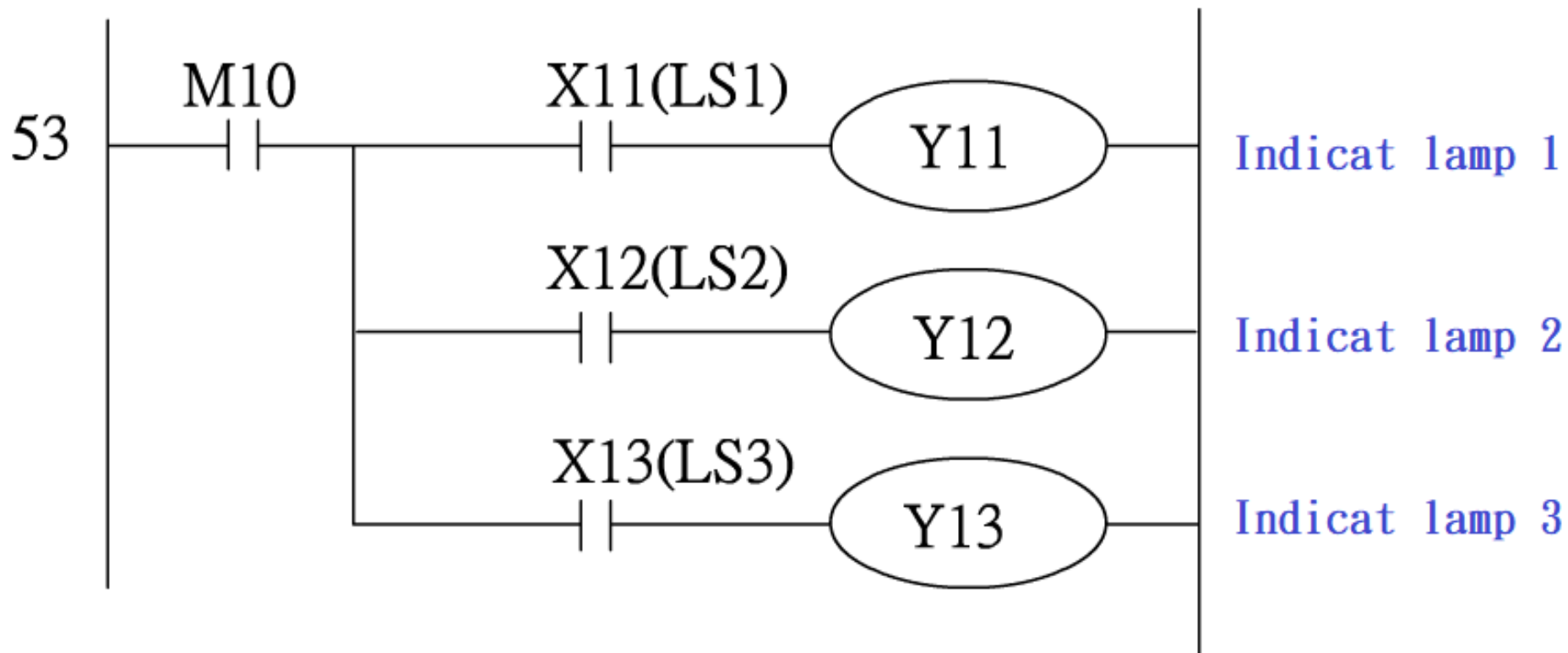
- X1  PB1
- X2  PB2
- X3  PB3
- X4  PB4
- X5  PB5

Trolley positioning

Penempatan troli

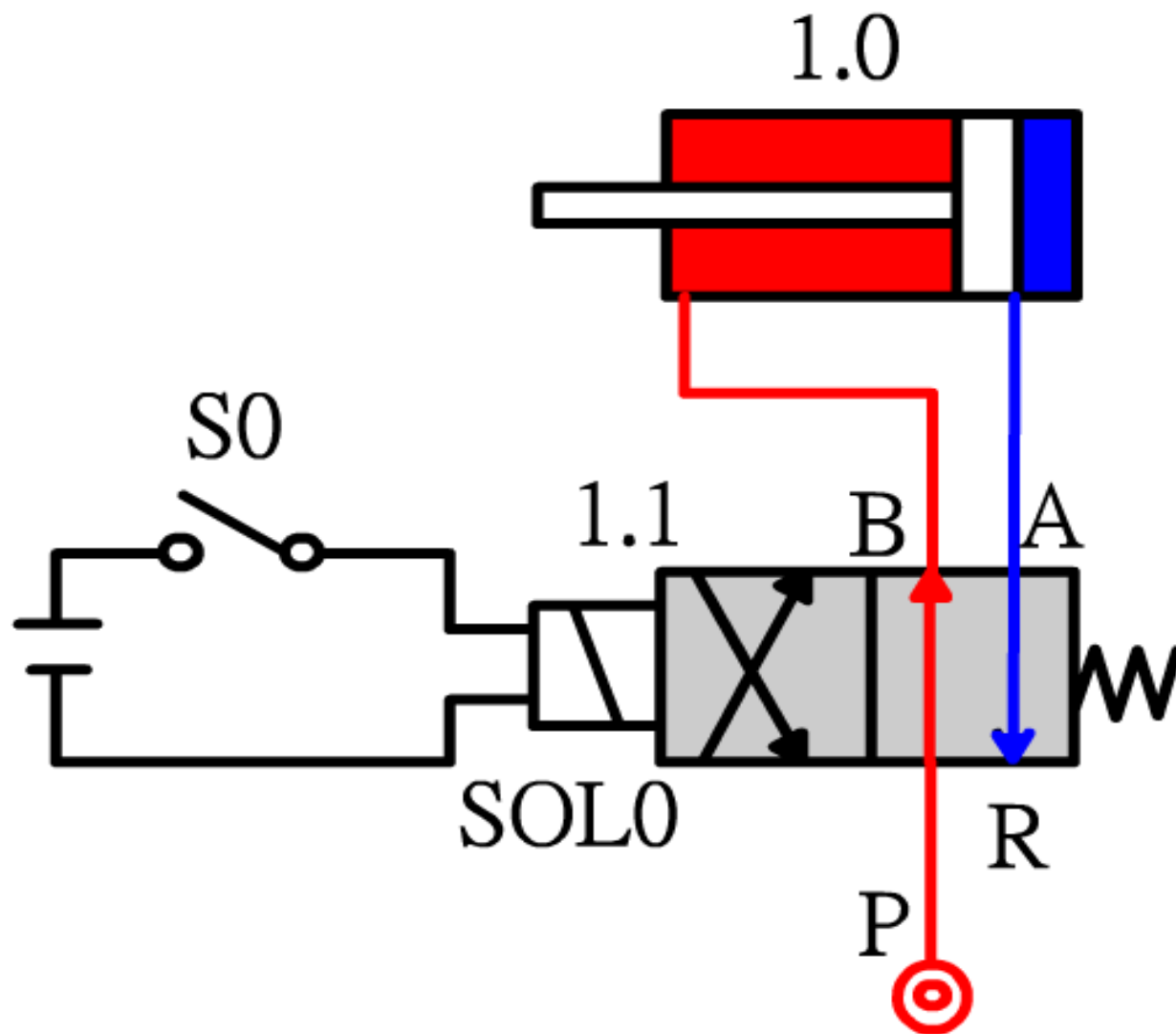


台車定位控制回路

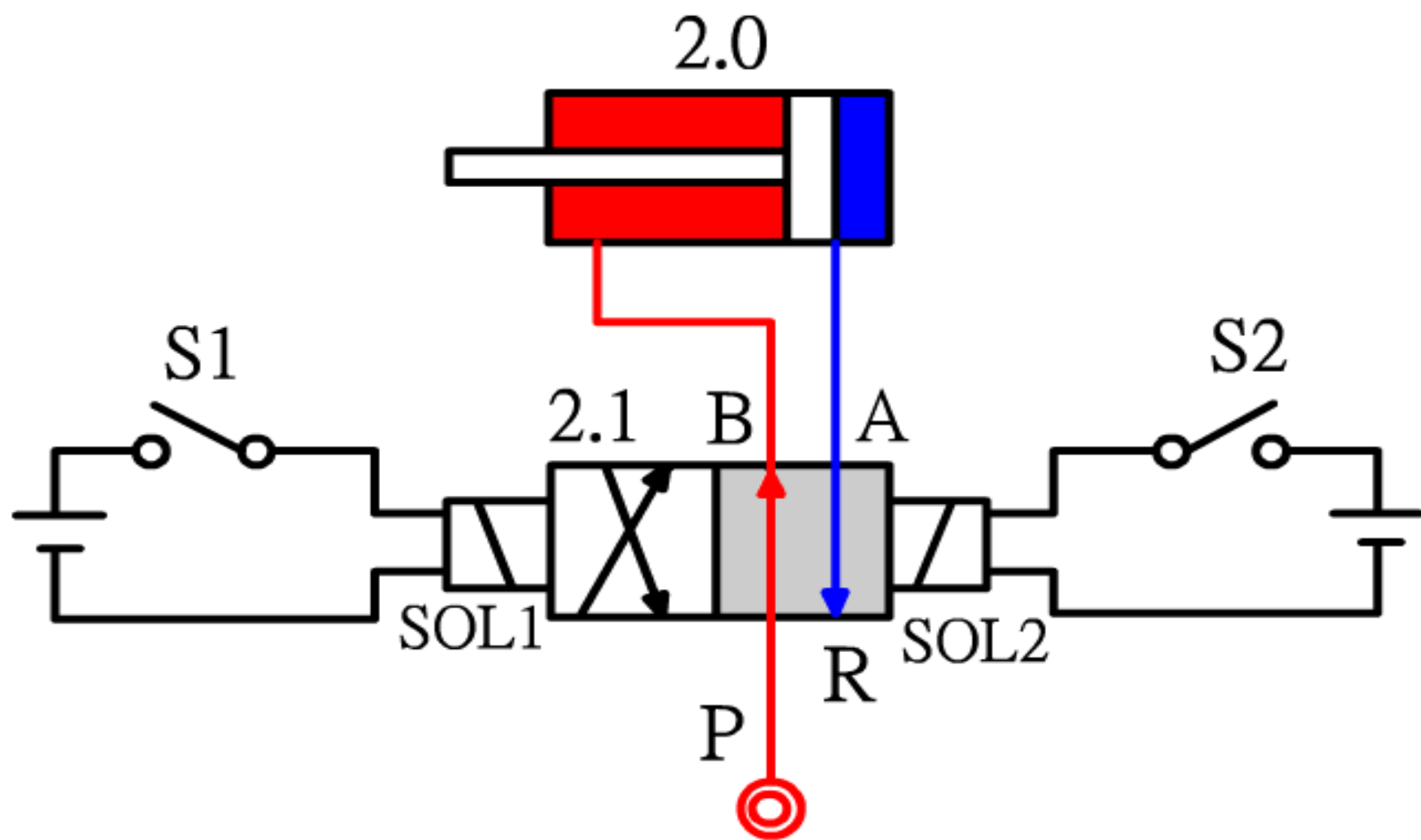


Trolley positioning indicator Circle

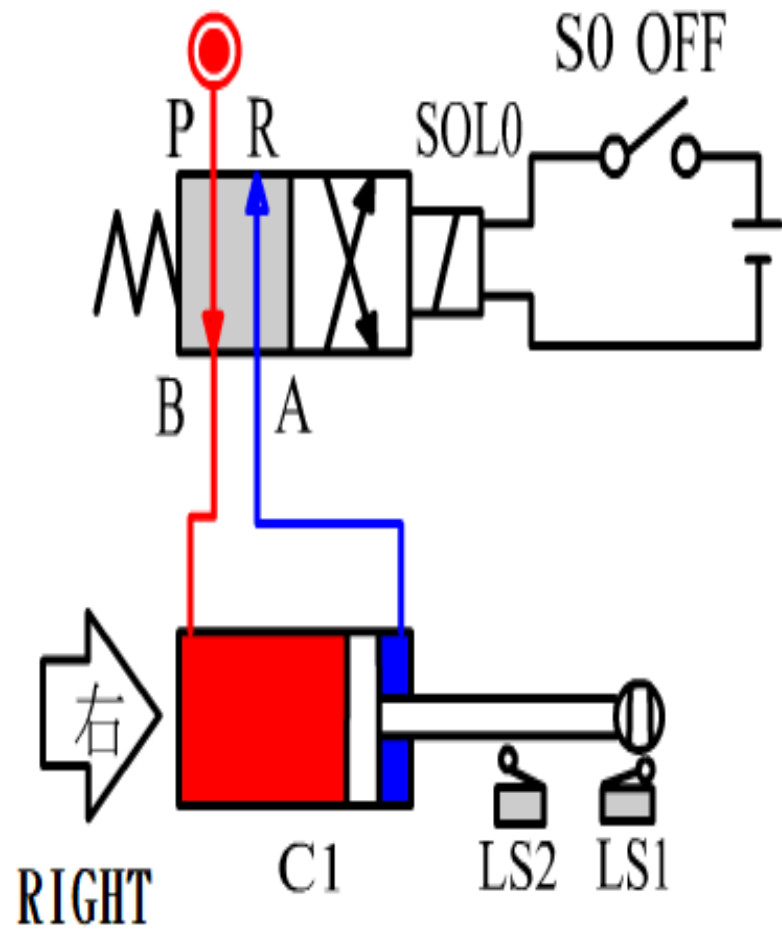
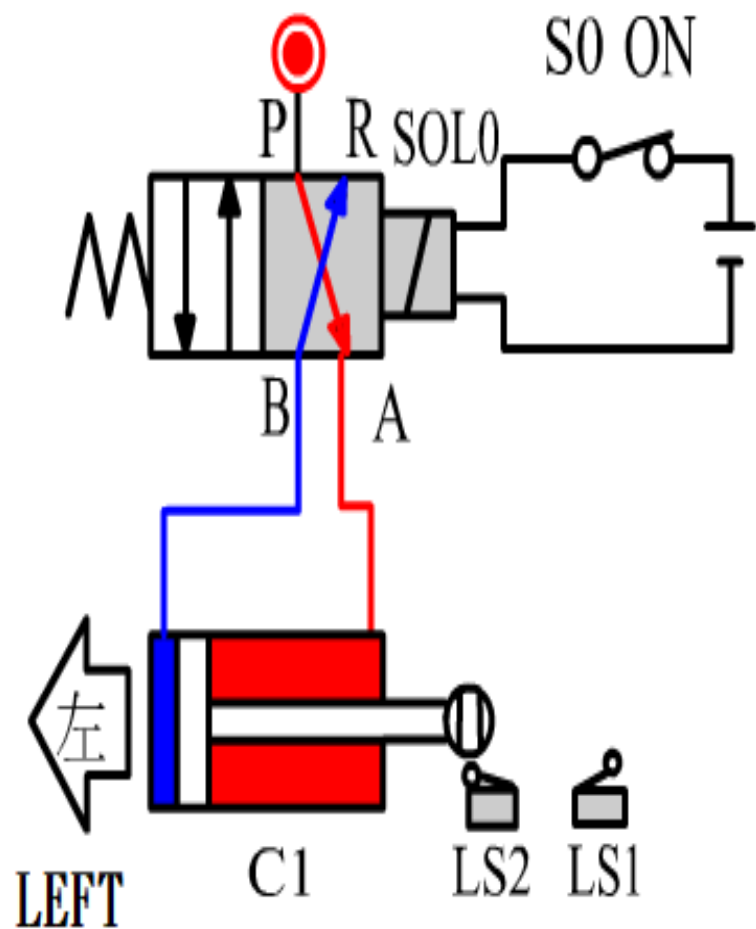
PROGRAM :	53 LD M10	58 AND X12
	54 MPS	59 OUT Y12
	55 AND X22	60 MPP
	56 OUT Y11	61 AND X13
	57 MRD	62 OUT Y13



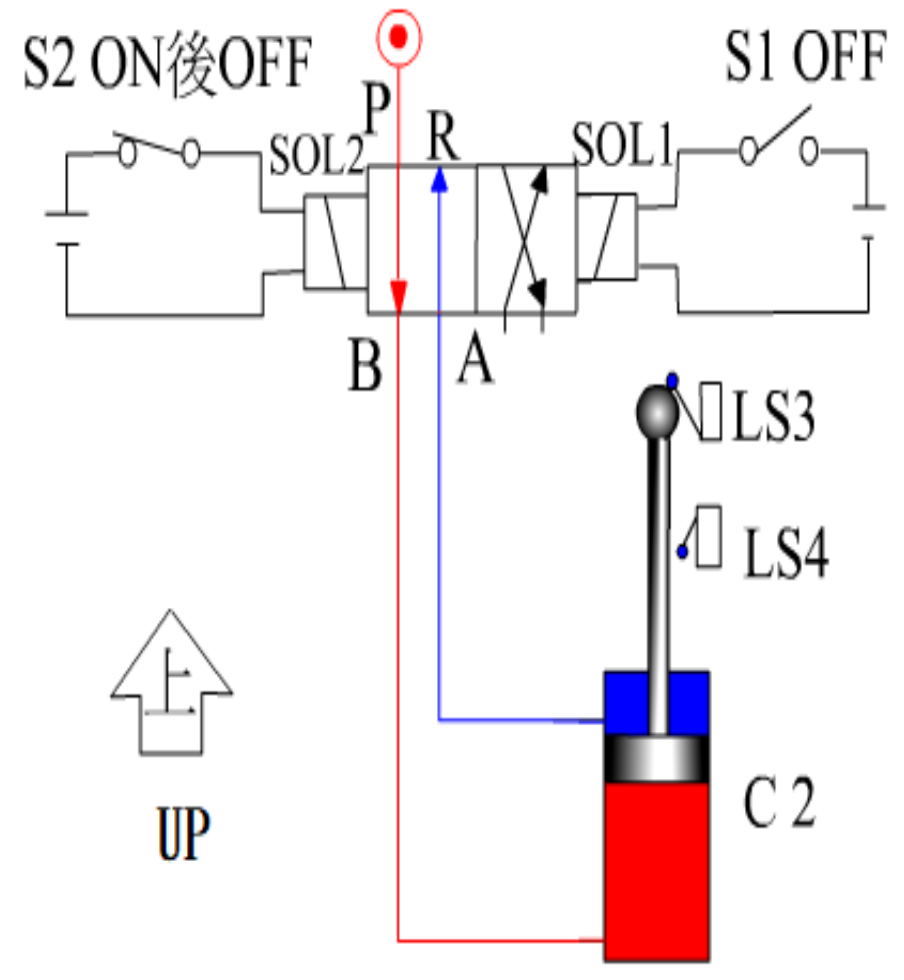
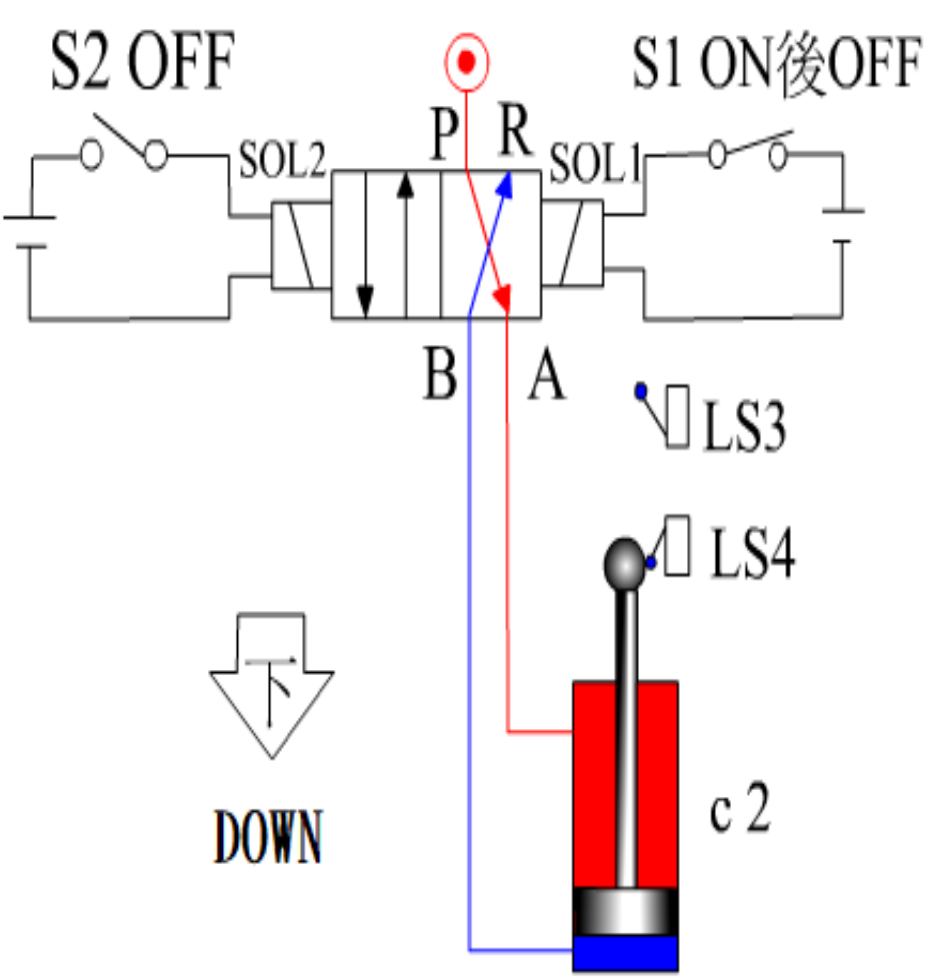
Single solenoid valve control pneumatic cylinder
 Silinder pneumatik kontrol katup solenoid tunggal



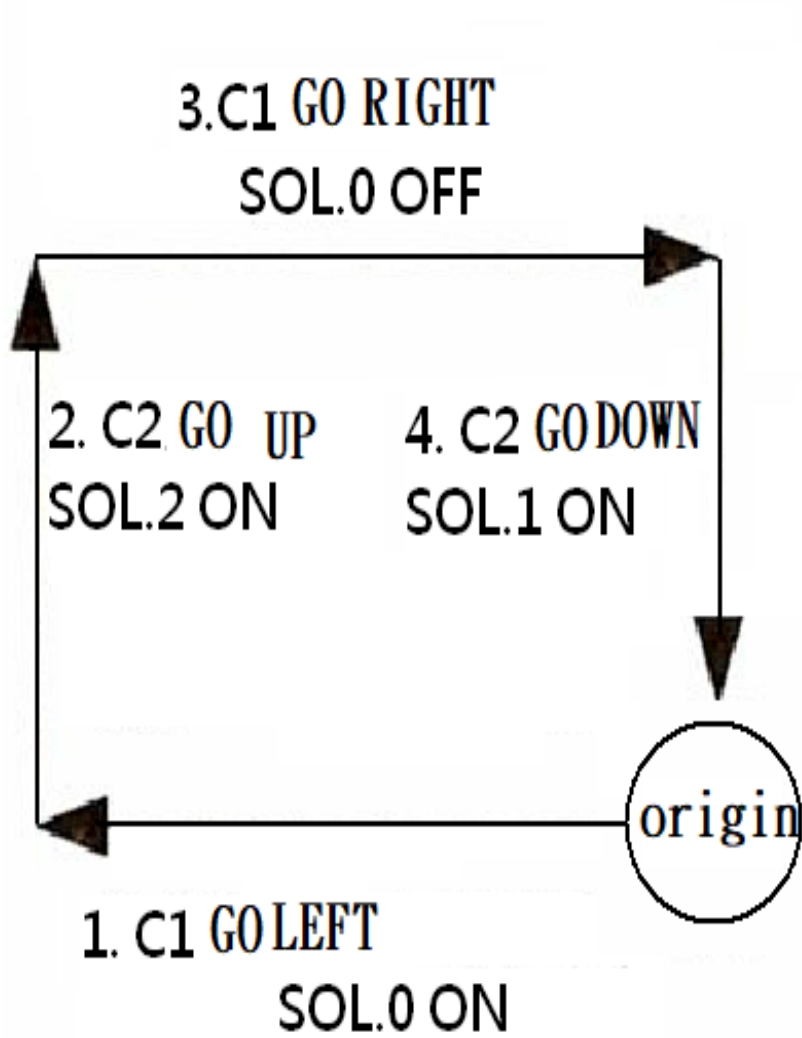
Double solenoid valve control air cylinder
 Silinder udara kontrol katup solenoid ganda



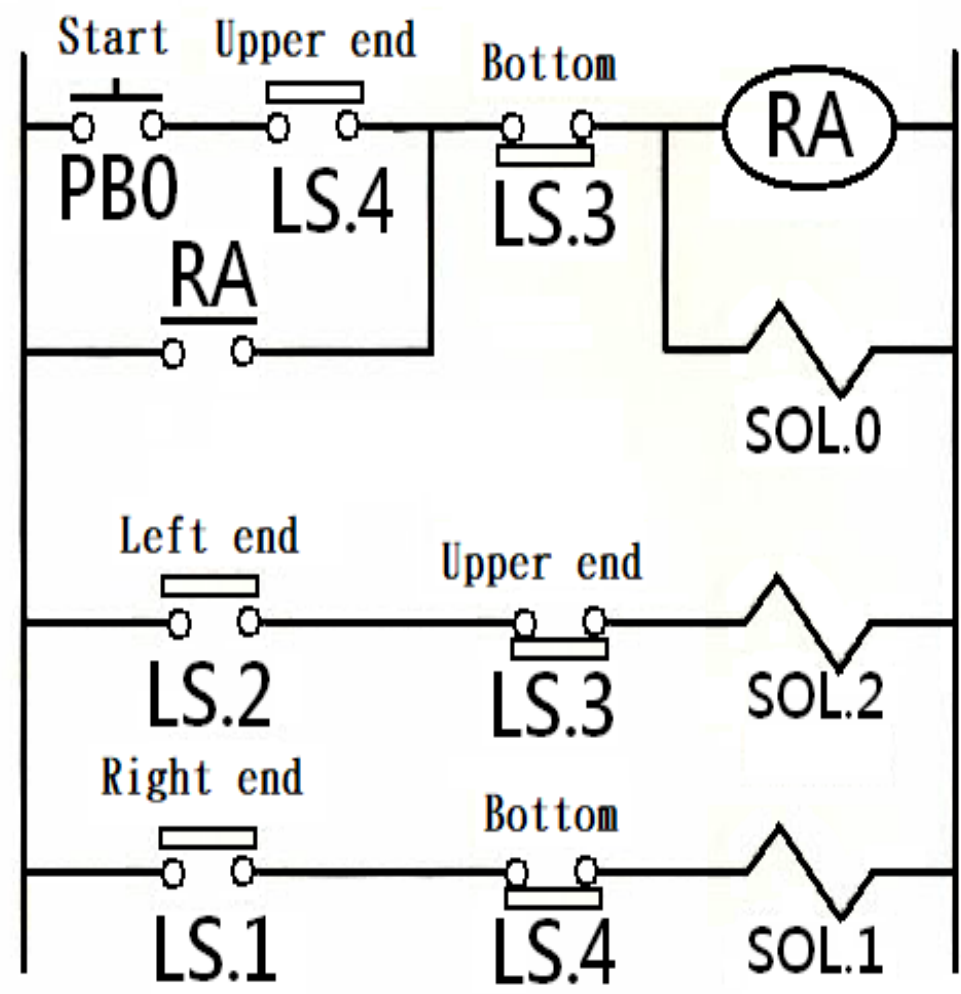
Single solenoid valve controls the left and right movement of the pneumatic cylinder



Double solenoid valves control the up and down movement of the pneumatic cylinder

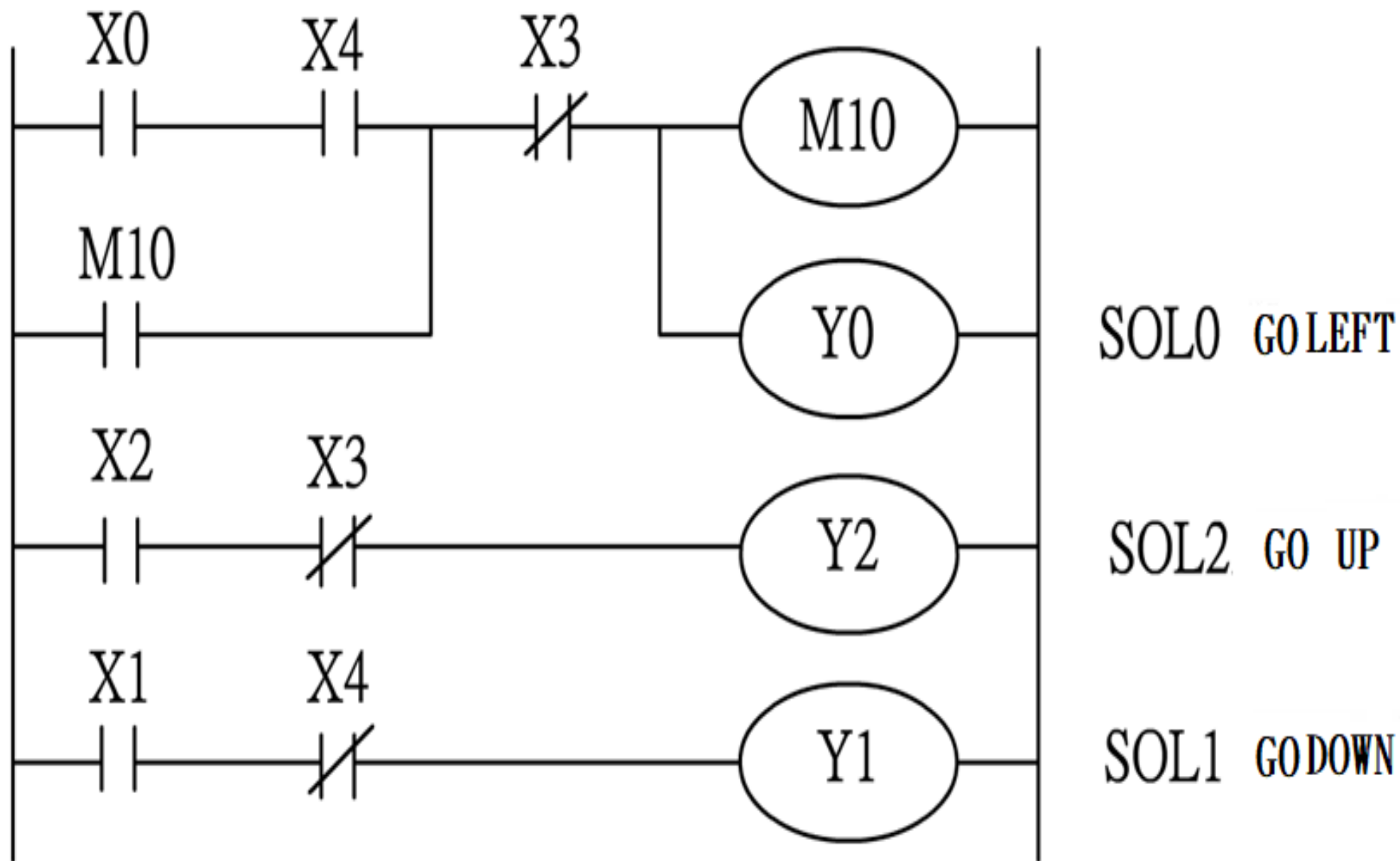


(a) Action diagram



(b) control circuit diagram

Pneumatic cylinder action control diagram



PLC control action diagram

FIN



Jay Janner / The Gazette

